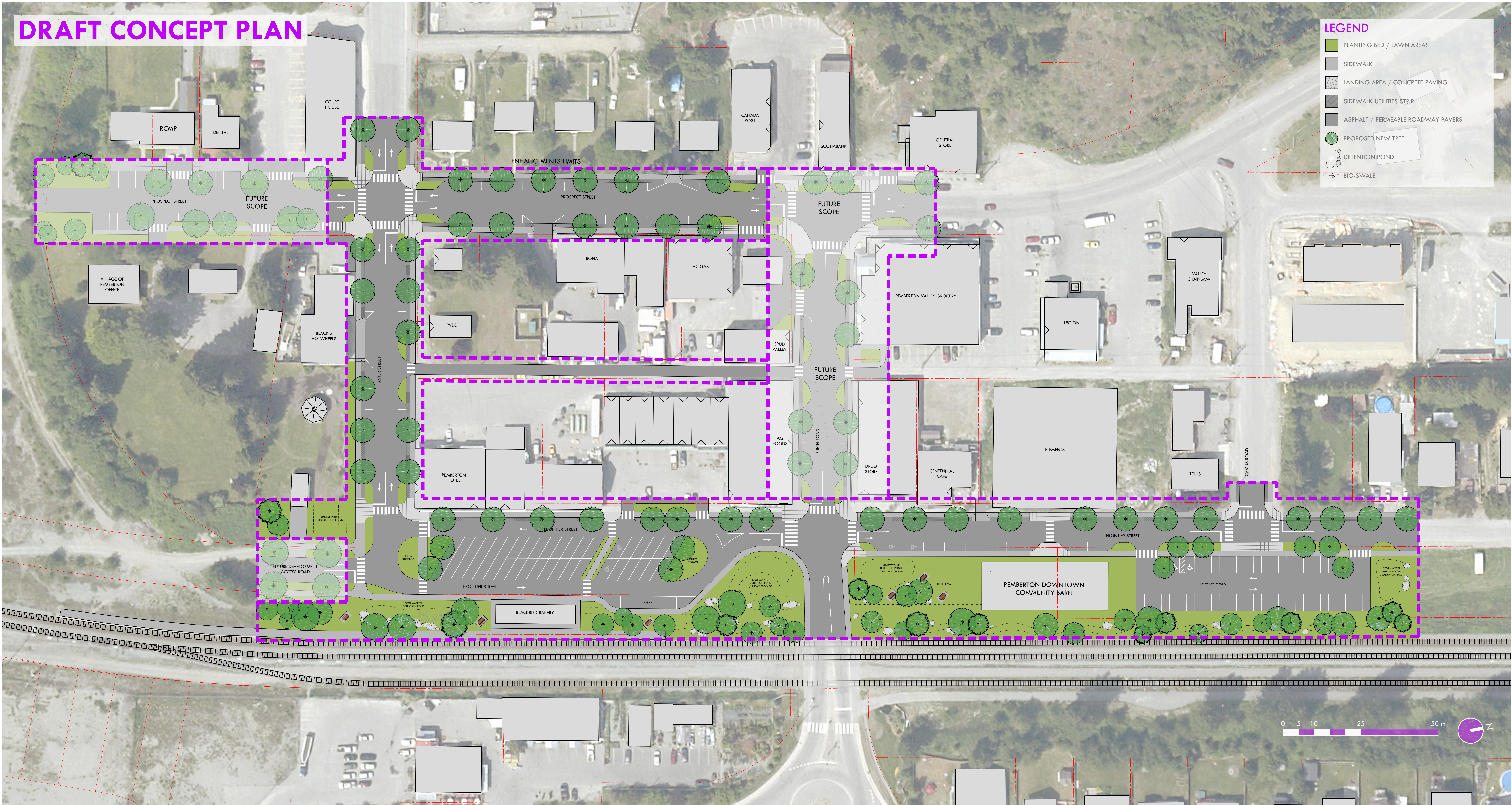


DRAFT CONCEPT PLAN



DOWNTOWN REVITALIZATION

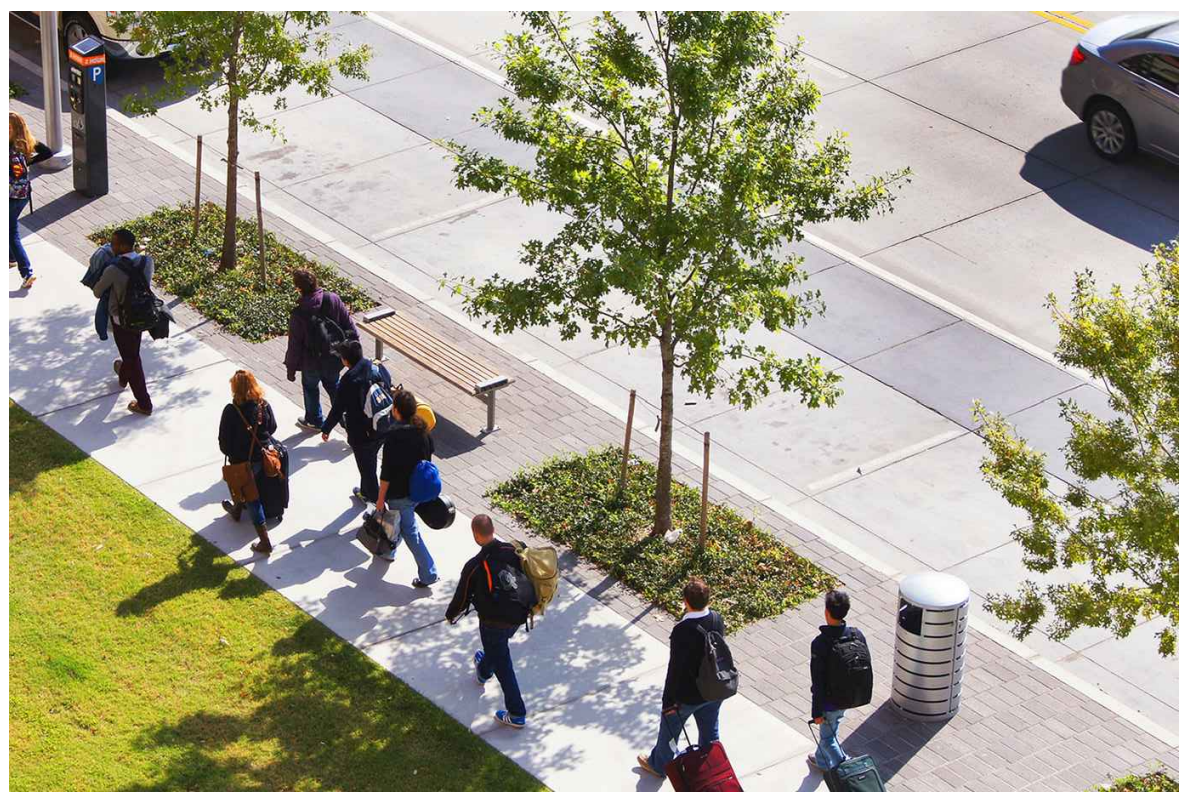
Rehabilitating the Village's downtown core is a locally and regionally significant initiative that will consist of essential upgrades to underground infrastructure and key improvements to roads, sidewalks, waterlines, stormwater management and streetlighting. These important works will build our community's resilience to climate change, while creating a walkable, vibrant downtown that will support our businesses and accommodate future growth.



WIDENED SIDEWALKS



STREET LIGHTING



STREET TREES

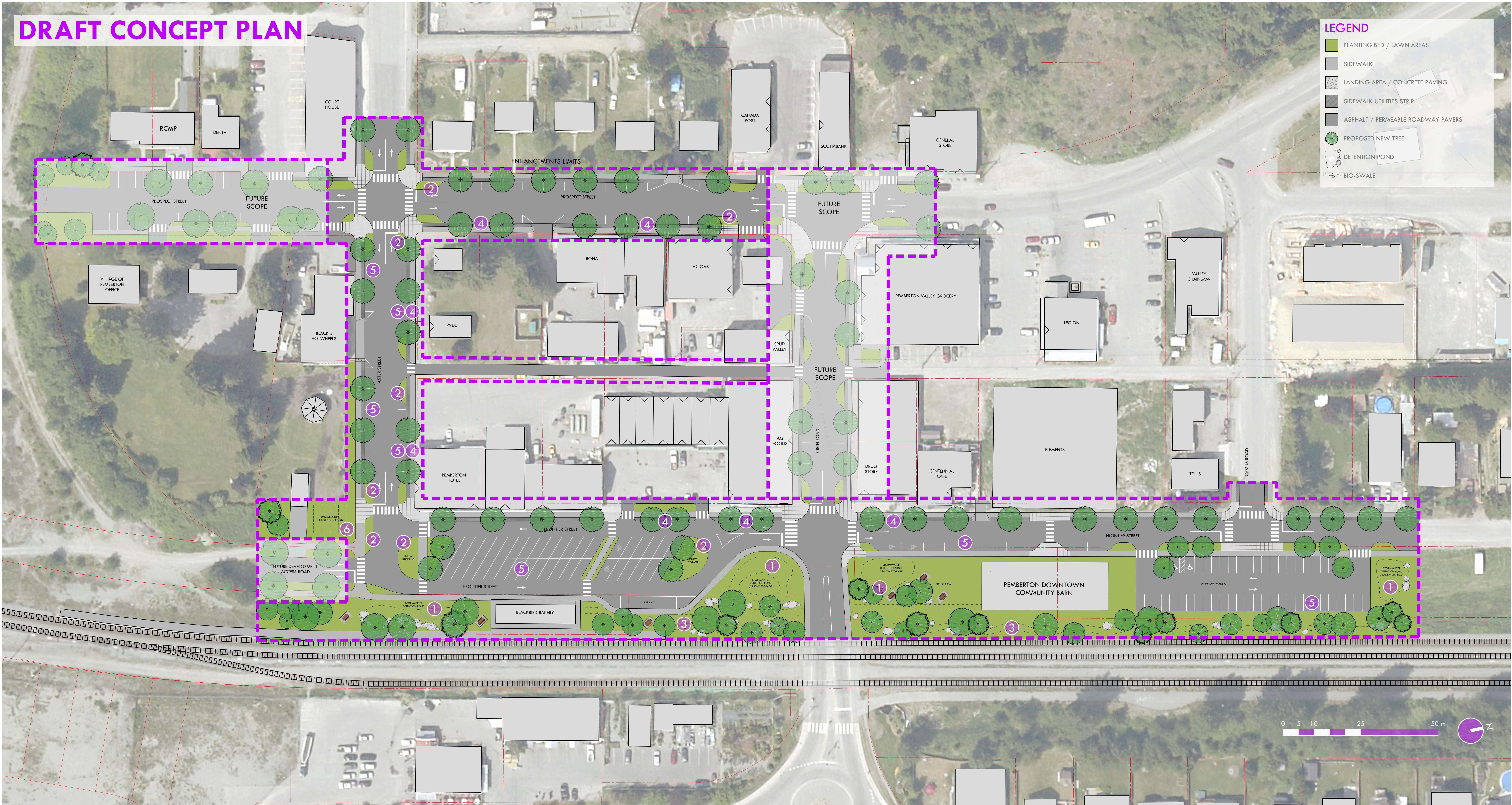


PICNIC AREAS

PEMBERTON DOWNTOWN ENHANCEMENT

DOWNTOWN REVITALIZATION

DRAFT CONCEPT PLAN



1 STORMWATER DETENTION POND
Strategic ponds are located throughout the project to allow natural water infiltration in storm events.



2 BIO-FILTRATION BEDS
Filtration beds play a key role in reducing the amount of runoff and increasing water quality.



3 BIO-SWALE
Stormwater is purified through air exposure and plants bio-filtration.



4 STRATA CELL ROOT SYSTEM
Strata cells provide the adequate soil volumes for healthy trees in constrained locations.



5 PERVIOUS PAVEMENT
Permeable roadway pavers will be installed in strategic parking locations to reduce stormwater runoff.



6 UNDERGROUND CISTERN
Filtered stormwater will be collected in an underground cistern system for park irrigation.



IMPROVED STORMWATER TREATMENT
State of the art treatment utilities will be installed to efficiently purify overflows and stormwater runoff.