

## VILLAGE OF PEMBERTON

### BYLAW No. 688, 2012

---

A Bylaw to authorize the closure of a portion of dedicated road.

---

**WHEREAS** pursuant to the *Community Charter*, Council may by bylaw close to traffic a portion of a highway that is vested in the municipality and to remove its dedication as a highway;

**AND WHEREAS**, Council now deems it advisable to stop up and close to traffic and remove the dedication of that portion of road legally defined as that portion of road dedicated by the deposit of KAP 87467, Lillooet District, being a portion of D.L. 4769, Lillooet District and lying adjacent to Lots 1 and 2, DL 4769, Lillooet District, Plan KAP 87467 and Forest Service Road down on Plan KAP 44479, Lillooet District and is shown as Lot A on a Reference Plan which is attached to and forms part of this Bylaw (the "Closed Road");

**AND WHEREAS** the portion of road shown on the attached Plan is no longer required for road purposes;

**AND WHEREAS** the Village of Pemberton has advertised notice of intention to adopt this Bylaw as required under the *Community Charter*;

**NOW THEREFORE** be it resolved that the Council for the Village of Pemberton in open meeting assembled enacts as follows:

1. This Bylaw may be cited for all purposes as the "Village of Pemberton Airport Leasehold Subdivision Road Closure Bylaw No. 688, 2012".
2. All that portion of the Closed Road is hereby stopped up and closed to traffic and the dedication as road is hereby removed.
3. On deposit of all documentation for the closure of the Closed Road in the Kamloops Land Title Office, the Closed Road is stopped up and closed to public traffic, the dedication is removed and it shall cease to be a public highway.
4. The Mayor and Corporate Officer are hereby authorized to execute all documentation necessary to give effect to the provisions of this Bylaw, including the plan attached hereto.

**READ A FIRST TIME** this 10<sup>th</sup> day of January, 2012.

**READ A SECOND TIME** this 10<sup>th</sup> day of January, 2012.

**READ A THIRD TIME** this 10<sup>th</sup> day of January, 2012.

Pursuant to section 40 (3) of the *Community Charter*, notice of Council's intention was advertised in the Thursday, December 29<sup>th</sup>, 2011 and Thursday, January 5<sup>th</sup>, 2012 editions of "The Question" and an opportunity was given to persons who considered they are affected by this bylaw to make representation to Council at the January 10<sup>th</sup>, 2012 Council Meeting.

**RECONSIDERED, FINALLY PASSED AND ADOPTED** this 24<sup>TH</sup> day of January, 2012.

---

Mayor

---

Corporate Officer

REFERENCE PLAN TO ACCOMPANY BY-LAW NO. 688, 2012,  
 OF THE VILLAGE OF PEMBERTON STOPPING UP AND CLOSING  
 THE ROAD DEDICATED BY THE DEPOSIT OF PLAN KAP 87467,  
 LILLOOET DISTRICT, BEING A PORTION OF D. L. 4769,  
 LILLOOET DISTRICT AND LYING ADJACENT TO LOTS 1 AND 2,  
 D. L. 4769, LILLOOET DISTRICT, PLAN KAP 87467 AND  
 FOREST SERVICE ROAD SHOWN ON PLAN KAP 44479, LILLOOET DISTRICT

PURSUANT TO SECTION 40 (1) (a) OF THE COMMUNITY CHARTER  
 B. C. G. S. 92 J 027

20 10 0 20 40

The intended plot size of this plan is 560mm in width by 864mm  
 in height (Sheet size D) when plotted at a scale of 1:1000

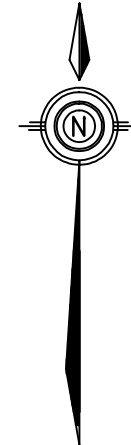
All linear measurements are shown as  
 horizontal ground level distances  
 in metres and decimals thereof

**LEGEND**

Bearings are astronomic and are derived  
 from Plan Kap 87467

Found Placed

● Standard Iron Post [Type 5]

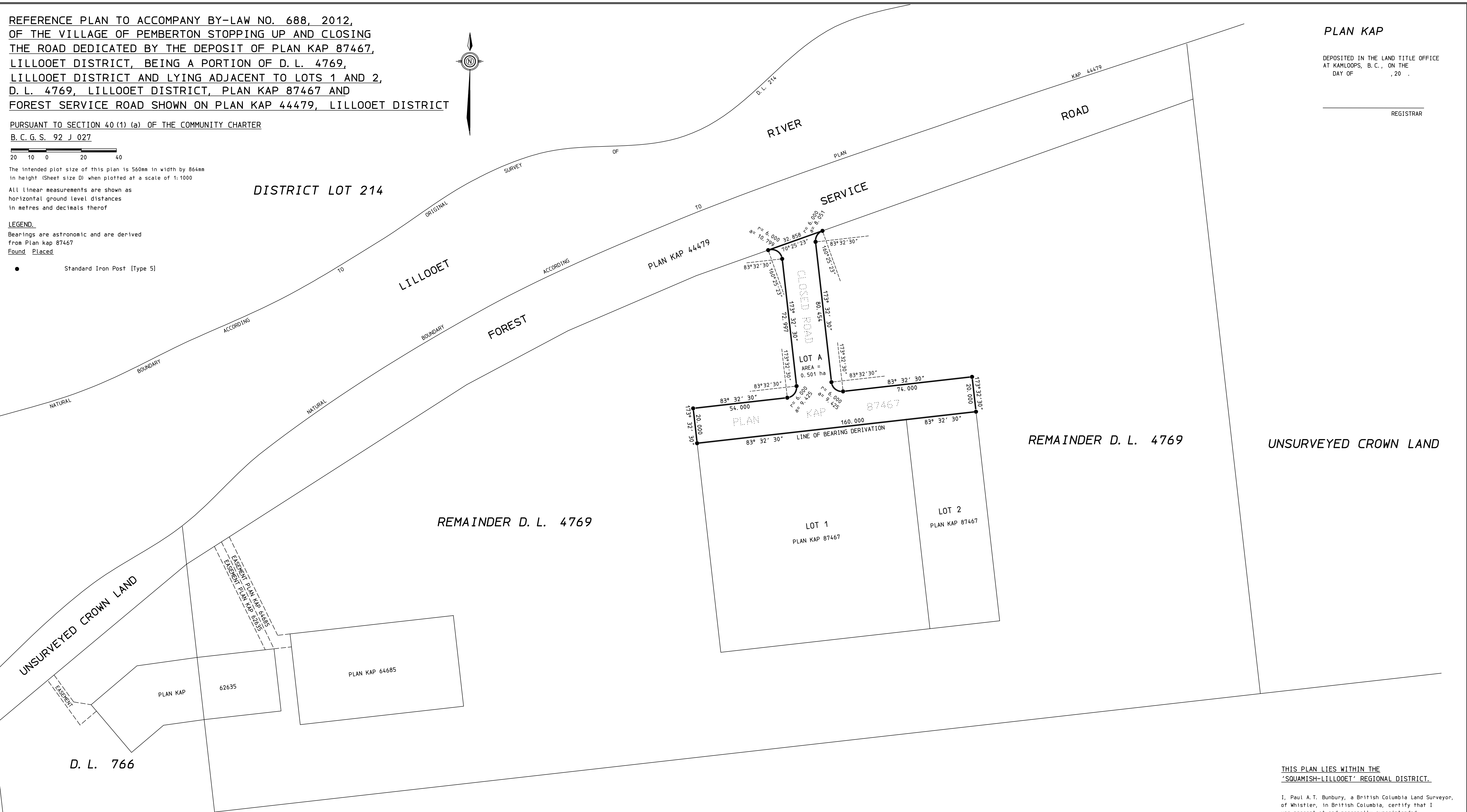


**PLAN KAP**

DEPOSITED IN THE LAND TITLE OFFICE  
 AT KAMLOOPS, B. C., ON THE  
 DAY OF \_\_\_\_\_, 20\_\_

REGISTRAR

DISTRICT LOT 214



REMAINDER D. L. 4769

UNSURVEYED CROWN LAND

REMAINDER D. L. 4769

D. L. 766

D. L. 766

THIS PLAN LIES WITHIN THE  
 'SQUAMISH-LILLOOET' REGIONAL DISTRICT.

I, Paul A.T. Bunbury, a British Columbia Land Surveyor,  
 of Whistler, in British Columbia, certify that I  
 was present at and personally superintended  
 the survey represented by this plan, and that  
 the survey and plan are correct. The field survey  
 was completed on the 8th day of November, 2011.  
 The plan was completed and checked, and the checklist  
 filed under ECP #130142, on the 22nd day of November, 2011.

B. C. L. S.

BUNBURY & ASSOC.  
 PROFESSIONAL B. C. LAND SURVEYORS,  
 SQUAMISH & WHISTLER, B. C.  
 #203-1080 MILLAR CREEK ROAD, WHISTLER, B. C., 604-932-3770